

Heavy Equipment Monitoring

Datalink's heavy Equipment Monitoring System will allow you to remotely monitor the GPS location of your equipment, including emergency alerts if it moves after hours. Equipped with a driver ID button will time stamp the operators, act as an engine immobilizer and prevent unauthorized use. The ultrasonic fuel sensor will track fuel usage and send you an emergency alert you when fuel levels are getting low on equipment. All data is stored on the DataBase for future analysis.

Addition add-ons are available including:

- OBD diagnostics of equipment abuse to monitor operators handling
- Remote engine shut off incase of theft



The i50 MobiHUB, designed by Datalink is probably the most advanced mobile data terminal available. It is available with a choice of networks including GSM, Iridium satellite, WiFi and local data radio links.



DRIVER ID & ENGINE LOCK-OUT

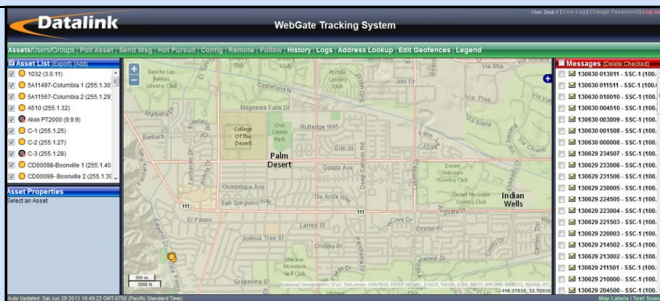
The Dallas i-Button is a very compact programmable intelligent device about the size of a quarter. The iButton reader is mounted close to the engine start switch and connected to the i50 MobiHUB. An authorized button login allows the driver to start the engine.

All driver login records and engine data are sent to DataGate and stored in a database.



ULTRASONIC FUEL LEVEL SENSOR

This device is attached to the outside bottom of the fuel tank, with the cable connecting to the i50 MobiHUB. Fuel levels are reported every few hours. An automatic report is sent at the 10% remaining level. Any sudden drop in level (theft) is reported to supervisors and maintenance department with GPS co-ordinates.



Datalink's WebGate (workstation program) is compatible with most web browser software. WebGate allows remote access & administration of software with different levels of user control. WebGate can be accessed by Windows based computers, tablets & smartphones.